

ΑΠΑΣ Νάξου **61 - 62** Ερμής Αργ/λης

65%	15 / 23	FT	10 / 23	43%
47%	17 / 36	2FG	14 / 29	48%
22%	4 / 18	3FG	8 / 26	31%
41	35 - 6	Rb	32 - 5	37
	15	Tu	16	

Referees: Σκουλαρίκης, Αλεξόπουλος, Τζανετάκης

By Quarter	1	2	3	4
ΑΠΑΣ Νάξου	11	16	23	11
Ερμής Αργ/λης	25	8	18	11

End of Quarter	1	2	3	4
ΑΠΑΣ Νάξου	11	27	50	61
Ερμής Αργ/λης	25	33	51	62



Ερμής Αργ/λης

Coach: Π. Γκαναβίας, Στ. Παπασπυριδάκος

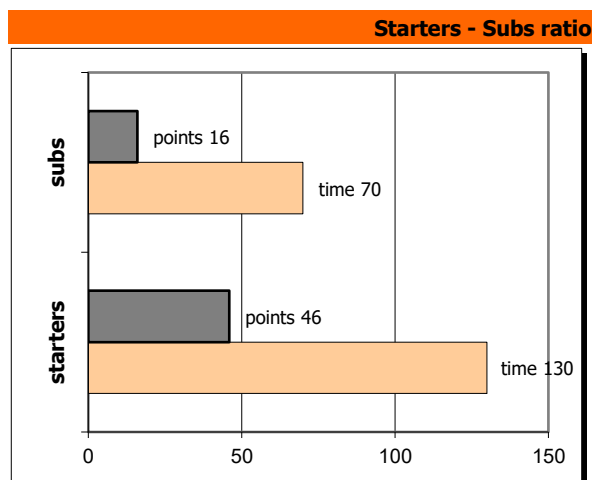
Fastbreaks: 2 / 2

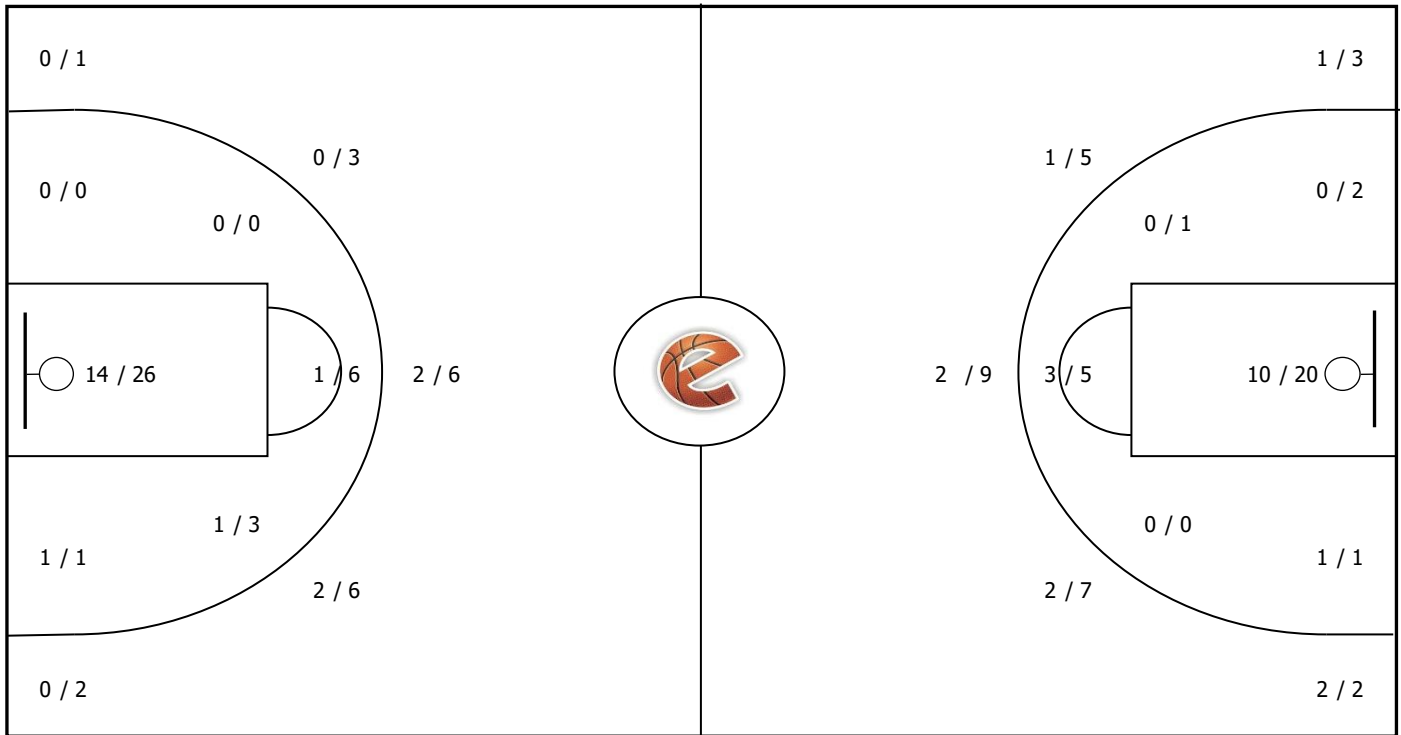
#	Player	Time (min)	Pts	Ft	2Fg	3Fg	+/-	Rbs		As	St	Tu	Bl	Fouls		Eff
								de	of					dr	co	
1	Τσακναρίδης Β.	7	0	0 / 0	0 / 0	0 / 3	-9	1	0	0	0	2	0	2	1	-4
5	Χατζηγιωαννίδης Ν.	10	2	2 / 2	0 / 0	0 / 1	-6	0	0	0	1	1	0	3	0	1
6	Βλάχος Γ.	1	0	0 / 0	0 / 0	0 / 0	-2	0	0	0	0	0	0	0	0	0
7	<b>Κυριλής Θ.</b>	<b>13</b>	<b>3</b>	<b>1 / 3</b>	<b>1 / 3</b>	<b>0 / 1</b>	<b>15</b>	<b>3</b>	<b>0</b>	<b>0</b>	<b>2</b>	<b>2</b>	<b>0</b>	<b>2</b>	<b>1</b>	<b>1</b>
8	<b>Παπαπέτρου Γ.</b>	<b>37</b>	<b>10</b>	<b>4 / 6</b>	<b>0 / 3</b>	<b>2 / 6</b>	<b>7</b>	<b>11</b>	<b>1</b>	<b>7</b>	<b>1</b>	<b>3</b>	<b>0</b>	<b>4</b>	<b>4</b>	<b>18</b>
3	Χάλαρης Στ.	19	4	0 / 0	2 / 4	0 / 1	-8	5	0	0	3	3	0	1	3	6
16	Καλαμπόγιας Αλ.	3	0	0 / 0	0 / 0	0 / 1	2	0	0	0	0	0	0	0	0	-1
11	<b>Κυριακόπουλος Δ.</b>	<b>31</b>	<b>18</b>	<b>1 / 2</b>	<b>4 / 5</b>	<b>3 / 6</b>	<b>4</b>	<b>2</b>	<b>2</b>	<b>1</b>	<b>2</b>	<b>1</b>	<b>1</b>	<b>1</b>	<b>3</b>	<b>20</b>
12	Σταύρου Π.	9	3	0 / 0	0 / 1	1 / 1	-3	2	0	0	0	0	0	0	2	4
13	<b>Γάργαλης Β.</b>	<b>26</b>	<b>10</b>	<b>2 / 8</b>	<b>4 / 9</b>	<b>0 / 1</b>	<b>9</b>	<b>6</b>	<b>1</b>	<b>6</b>	<b>1</b>	<b>1</b>	<b>1</b>	<b>6</b>	<b>3</b>	<b>12</b>
17	<b>Δέδες Κ.</b>	<b>23</b>	<b>5</b>	<b>0 / 2</b>	<b>1 / 1</b>	<b>1 / 2</b>	<b>-2</b>	<b>0</b>	<b>0</b>	<b>0</b>	<b>0</b>	<b>0</b>	<b>0</b>	<b>3</b>	<b>2</b>	<b>2</b>
21	Μαργκολίν Ντ.	21	7	0 / 0	2 / 3	1 / 3	-2	1	1	1	1	1	0	0	0	7
Team								1	0		2		1	0		
1st quarter			25	3 / 5	5 / 9	4 / 8		8	1	5	4	2	0	4	4	31
2nd quarter			8	1 / 4	2 / 7	1 / 6		11	0	3	2	6	1	6	5	6
3rd quarter			18	2 / 4	5 / 9	2 / 6		3	2	4	2	2	0	5	3	17
4th quarter			11	4 / 10	2 / 4	1 / 6		10	2	3	3	6	1	8	7	11
<b>Final Stats</b>		<b>200</b>	<b>62</b>	<b>10 / 23</b>	<b>14 / 29</b>	<b>8 / 26</b>	<b>5</b>	<b>32</b>	<b>5</b>	<b>15</b>	<b>11</b>	<b>16</b>	<b>2</b>	<b>23</b>	<b>19</b>	<b>65</b>
				<b>43%</b>	<b>48%</b>	<b>31%</b>		<b>37</b>								

ΑΠΑΣ Νάξου

Coach: Εμ. Μπραϊμάκης

#	Player	Pts	-	3s
0	<b>Βυνη Β.</b>	<b>11</b>	-	<b>0</b>
5	<b>Νικολάου Ι.</b>	<b>2</b>	-	<b>0</b>
1	<b>Σεργιένκο Ε.</b>	<b>6</b>	-	<b>0</b>
7	Φραντζέτης Χ.	0	-	0
8	<b>Καρουσινός Δ.</b>	<b>12</b>	-	<b>1</b>
20	Ντούσιας Γ.	4	-	0
27	Φίλιππας Ν.	9	-	1
11	<b>Σαρρής Ι.</b>	<b>2</b>	-	<b>0</b>
12	Κασιδάκης Ι.	0	-	0
13	Φραγκούλης Σ.	2	-	0
14	Ολύμπιος Κ.	6	-	2
15	Τζουγκαράκης Σ.	7	-	0

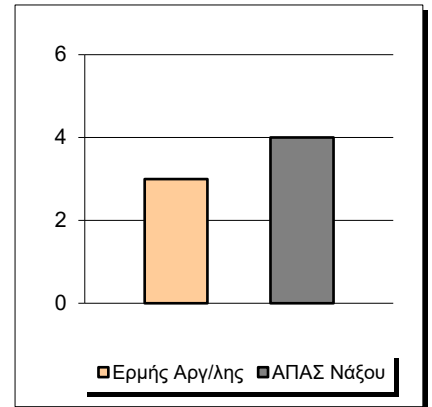
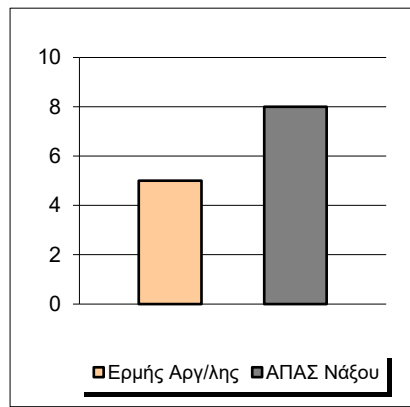
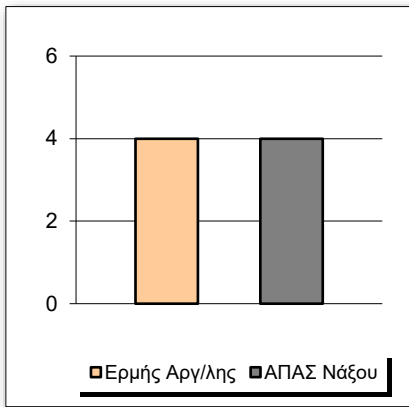




Fastbreak Pts

Turnover Pts

Second Chance Pts



Possessions

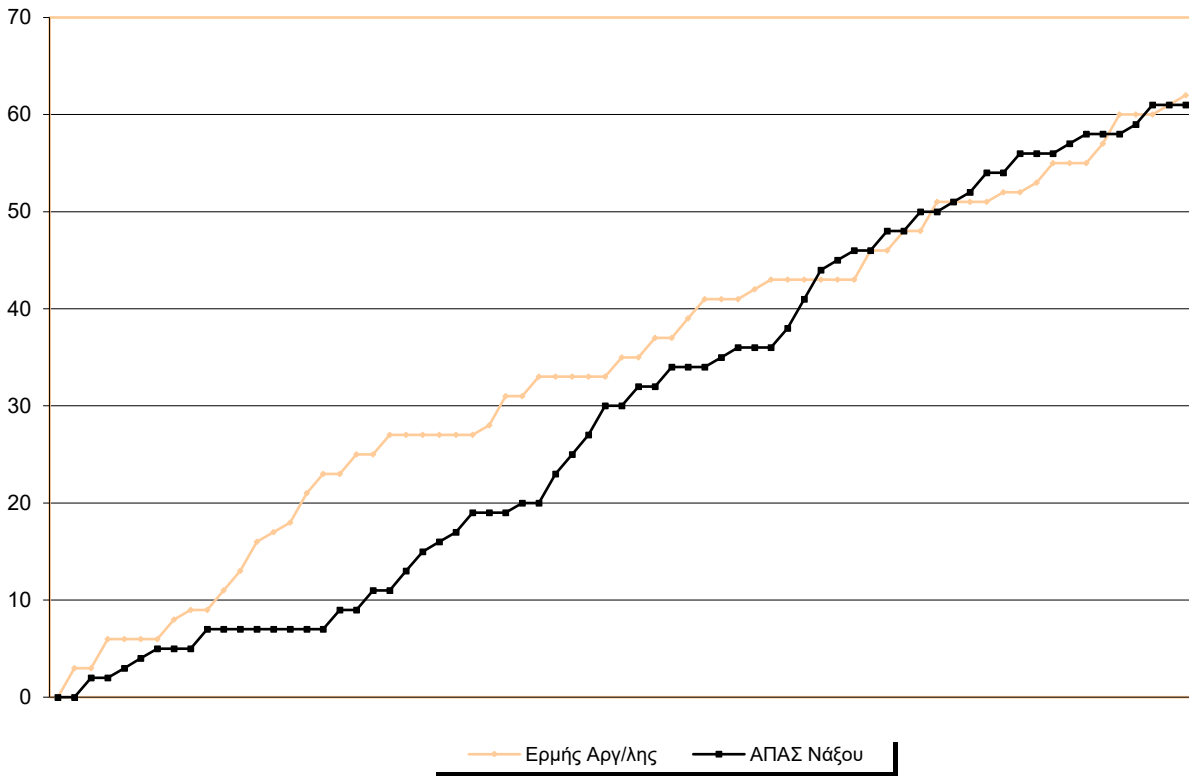
Notes

Ο Ερμής Αργ/λης είχε 94 κατοχές,  
 εκ των οποίων κατέληξαν: 55 σε σουτ  
 και 16 σε λάθος  
 και 23 σε κερδ. φάουλ

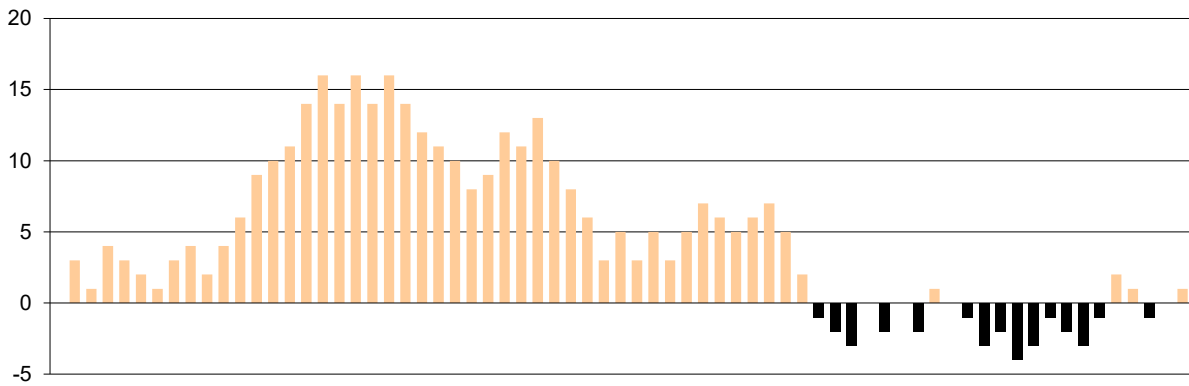


## GRAPHIC STATS

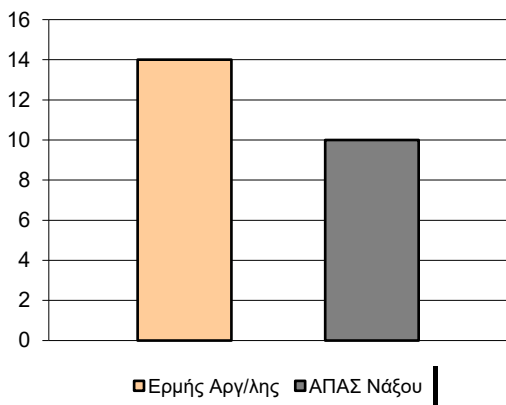
### SCORE EVOLUTION



### SCORE DIFFERENCE



### LARGEST SCORING RUN



### LARGEST LEAD

